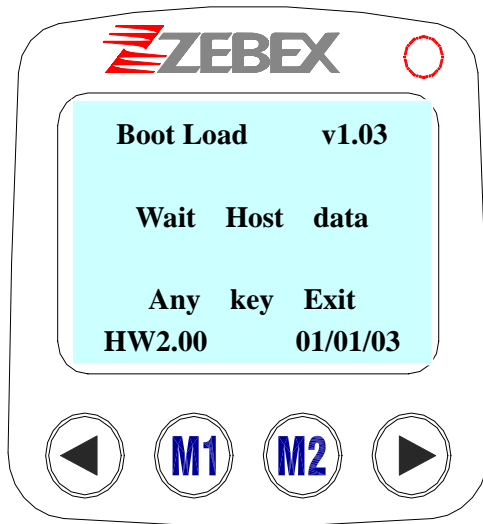


Bootload Procedure

1. Open PDL-20 back cover and put battery into PDL-20.
2. Power off PDL-20.
3. Press and hold <F1> and <F2> key then press <PW> key to power on PDL-20 and enter Bootload mode (See Figure as follow).



At the left down corner, "HW2.00" means the type of this machine is PDL-20A(with back light function), if it shows "HW1.xx" or blank means the type of this machine is PDL-20(without back light function) .

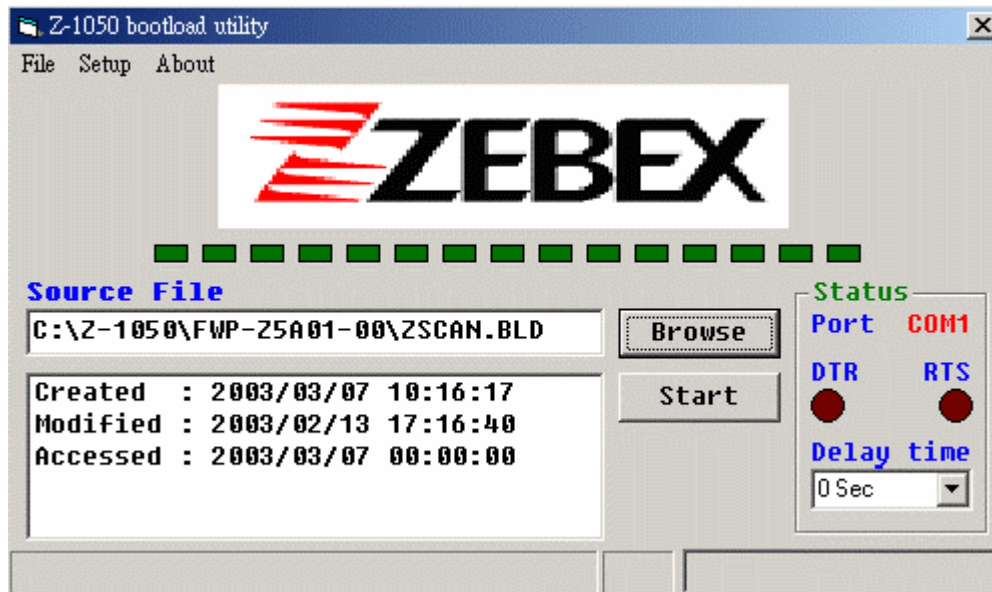
Notice: The firmware of PDL-20A and PDL-20 are different.

4. If <F1> + <F2> + <PW> can not enter bootload mode. Power off PDL-20 and take out main battery then press and hold <F1> + <F2> then put back main battery to power on PDL-20 and enter bootload mode.
5. Connect RS232 and adapter cable as follow.

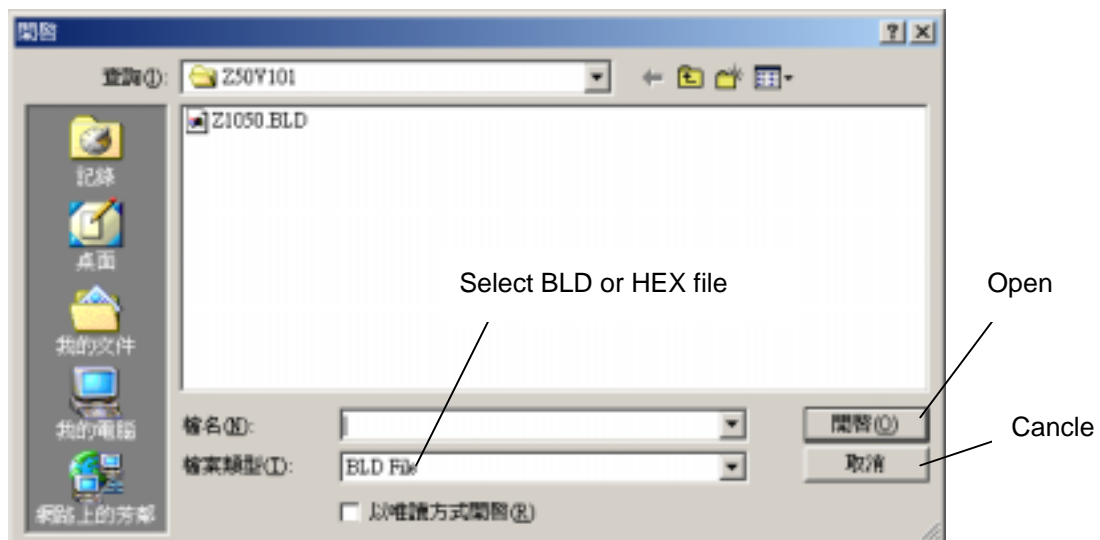


Fig 2

6. Extract Z50bot.zip.
7. Install Z50bot by double click setup.exe.
8. Execute Z50bot then you will see the figure as follow.



9. Click "Browse" button to select the firmware (xxx.bld or xxx.hex) which you want to bootload to PDL-20.



10. Click "Start" to begin bootloader procedure.