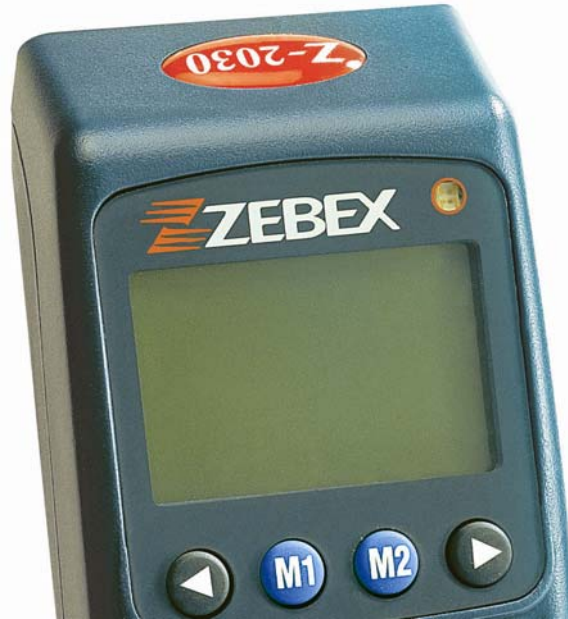


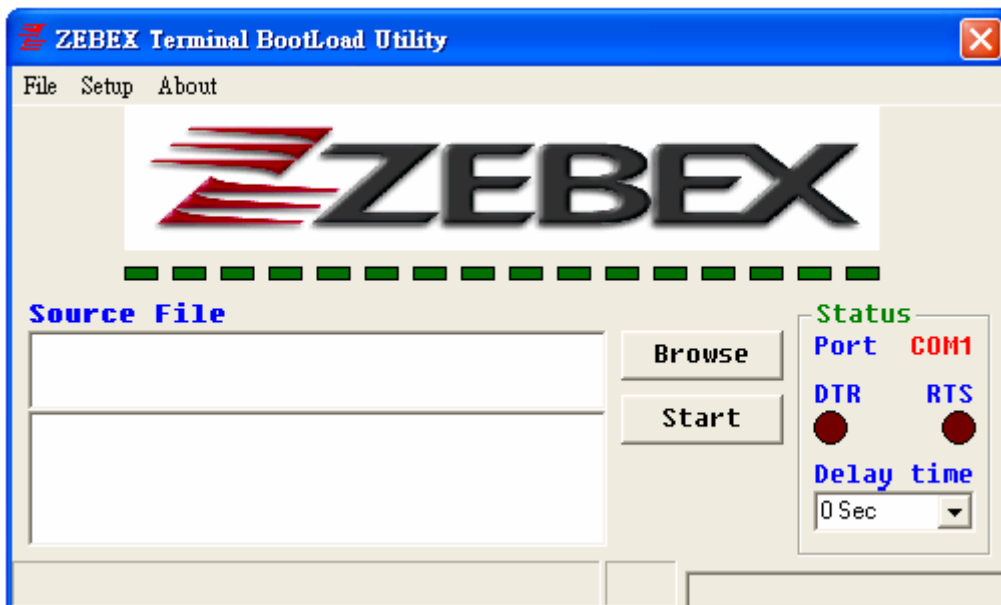
Z-2030 & PDL-20 Firmware Updating Steps

STEP 1: Connect the unit to PC and make sure it could upload and download data

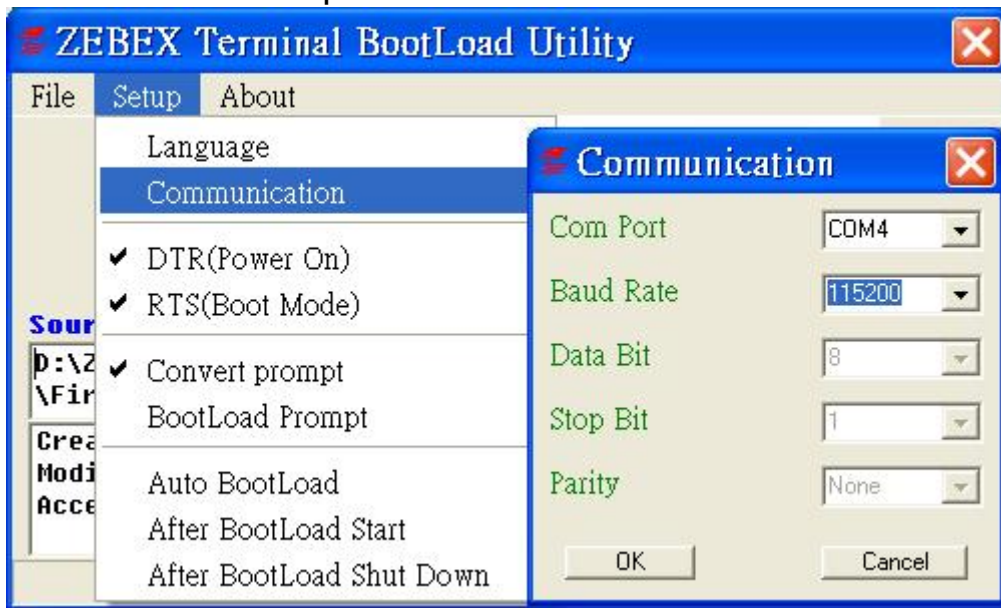
STEP 2: Make the unit power off.



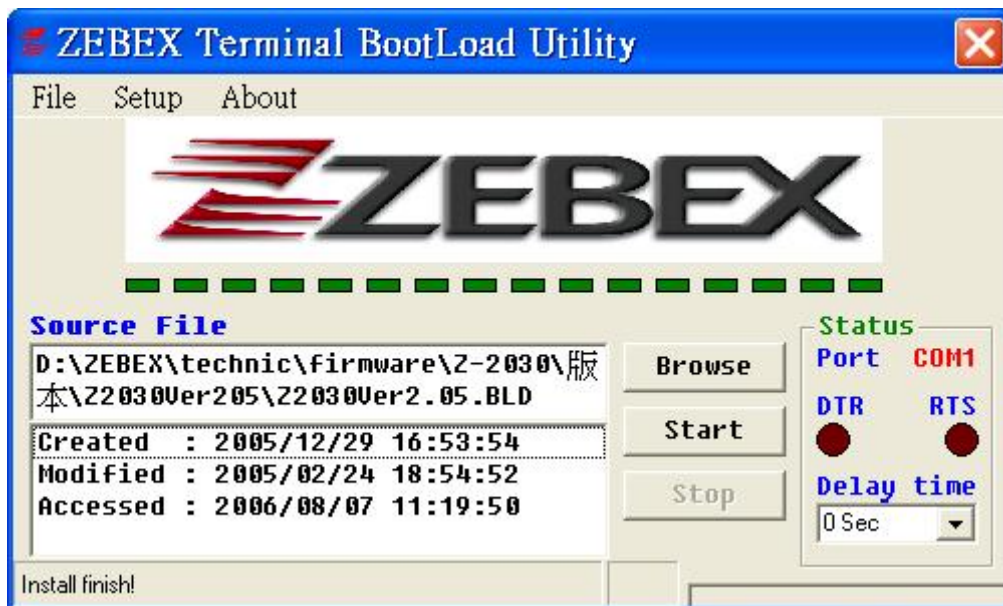
STEP 3: Run ZEBOTW v1.15 Terminal BootLoad Utility.



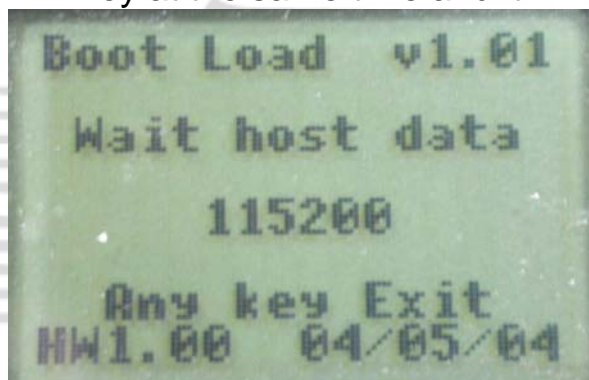
STEP 4: Choose a COM port to connect to unit.



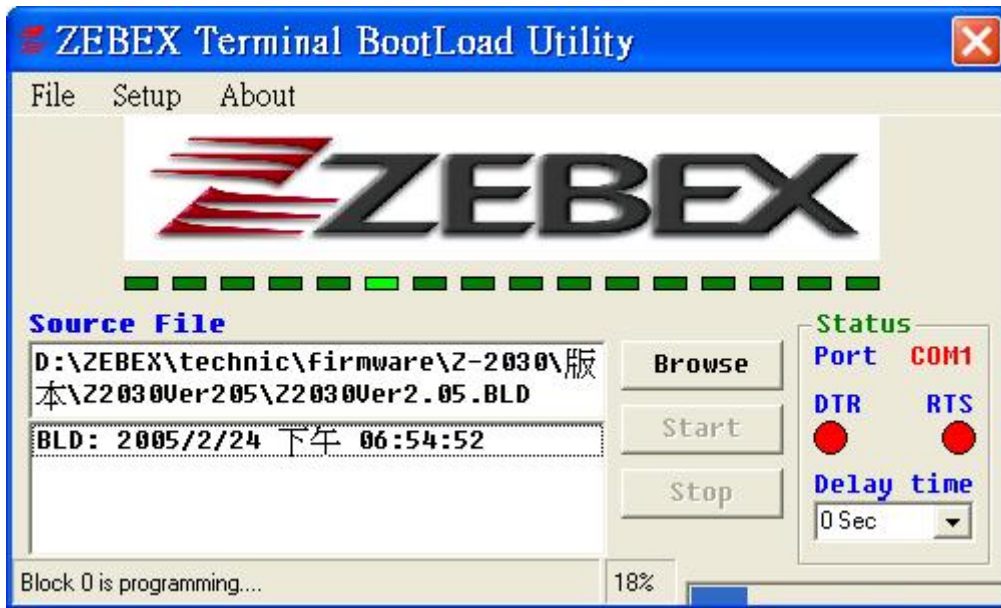
STEP 5: Browse and find the firmware file.



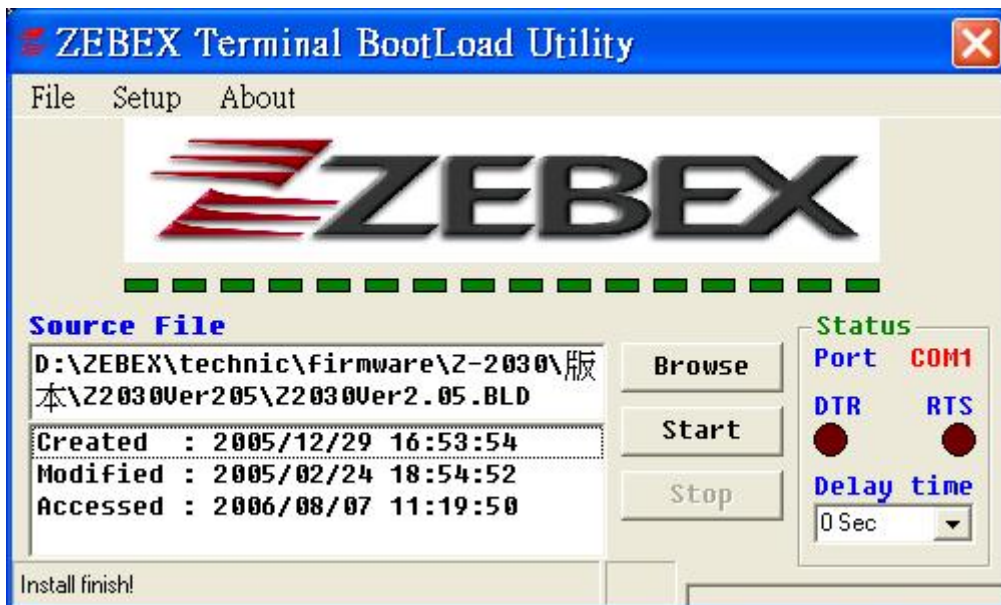
STEP 6: Press F1, F2 and PW key at the same time and it will show "Boot Load Mode" on the LCD.



STEP 7: Click “Start” button then the software will start to update.



STEP 8: Firmware update finished.



Step 9: Re-start the unit.

