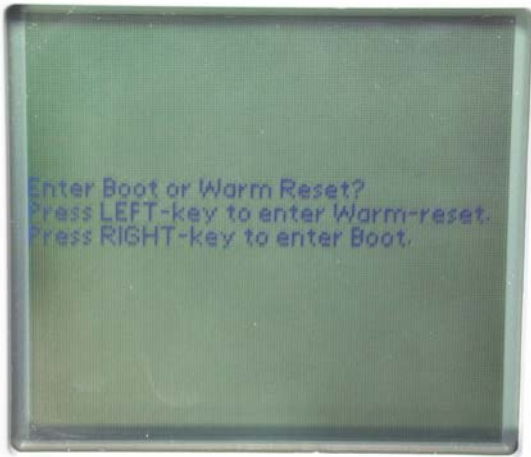


# Z-2050 Flash Upgrade Process

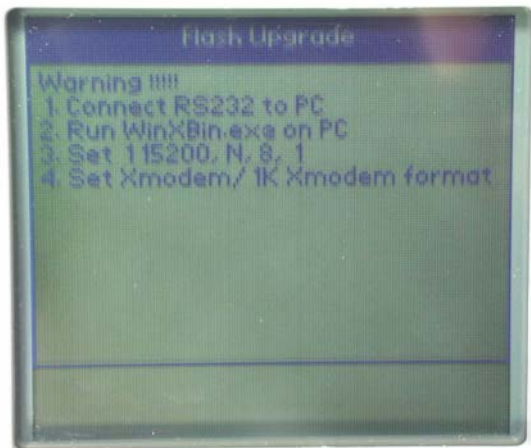
Date: 2008/02/27



1. Remove the black cap from the stylus to reveal the needle.
2. Press Power button and hold on, insert the needle into the reset hole between the power and backlight buttons for warm rest. Waiting for the power on, then get away from Power button.



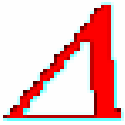
3. To get into next screen (see left picture). Press RIGHT-Key (Function 8 buttons) into the next step.



4. Get into the Flash Upgrade screen.

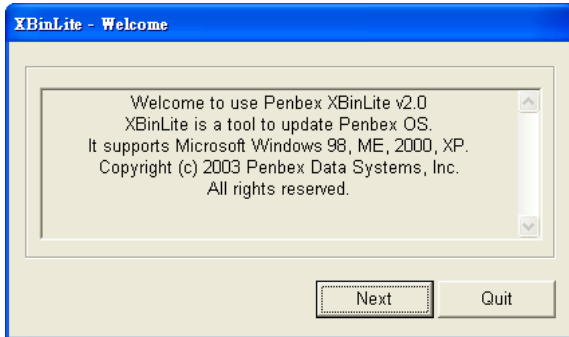


5. Connect Z-2050 to PC COM1 Port with RS-232 Cable.

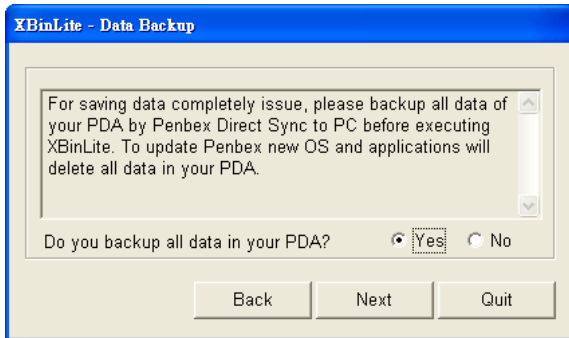


XbinLite2.0eng  
Xbin MFC Application

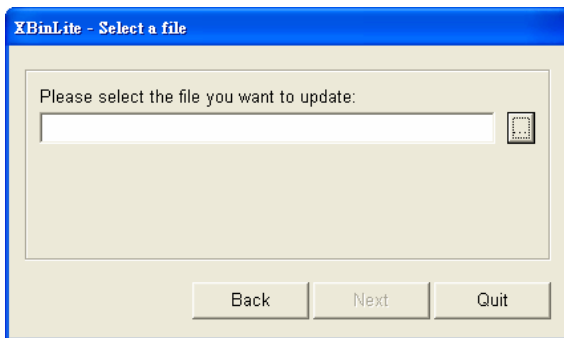
6. Double-click the icon “XbinLite2.0eng” on the screen.



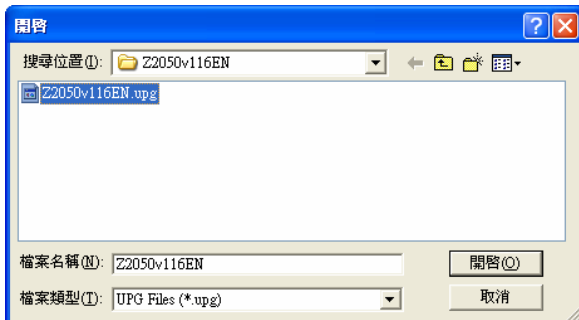
7. As showing” XbinLite – Welcome” dialogue box, please click “**NEXT**”.



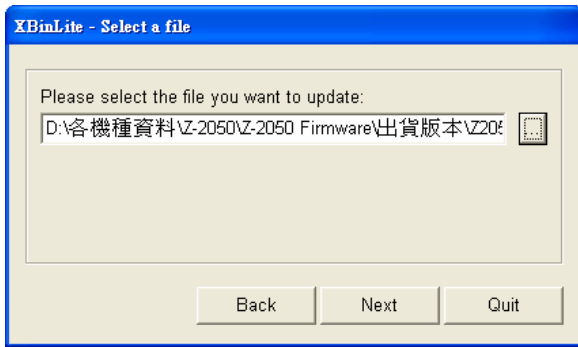
8. Then XbinLite – Data Backup will be shown, please select “**Yes**” and click “**Next**”.



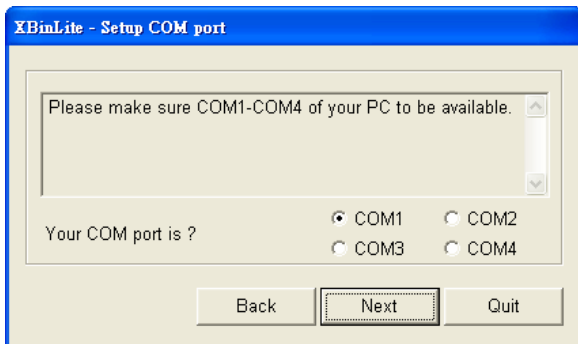
9. As “XbinLite – Select a file” showing, please select file location.



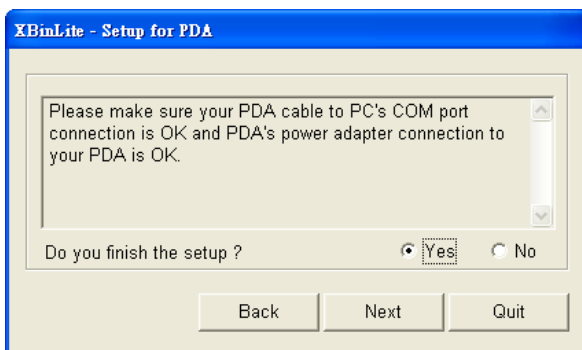
10. Please choose the direction of file that was stored before. Then click “**Open**”.  
**Be aware:** the Firmware version please accord to the ECN announcement.



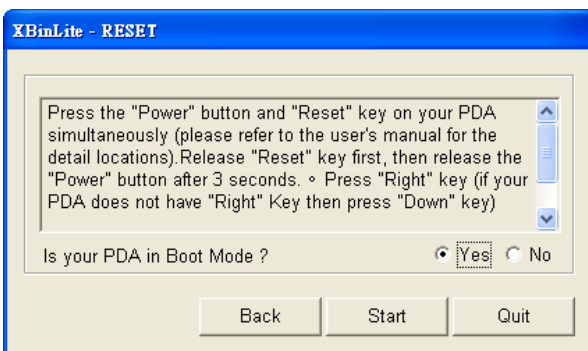
11. As “XbinLite – Select a file” dialogue box showing on the screen, then click “ **Next**”.



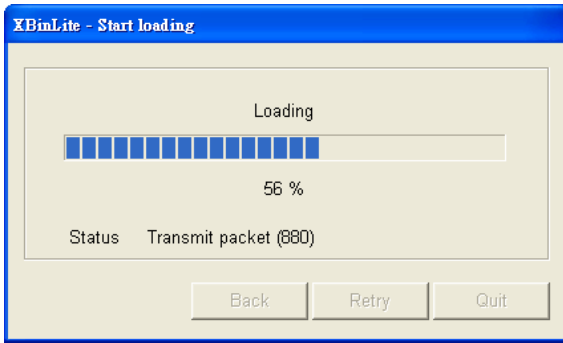
12. When show on “XbinLite – Setup COM port”, please click” **Next**”.



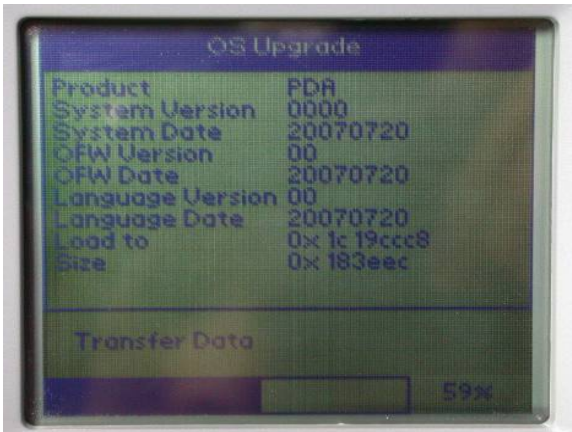
13. Following shown”XbinLite – Setup for PDA”, please select “**Yes**” first, and then click”**Next**”.



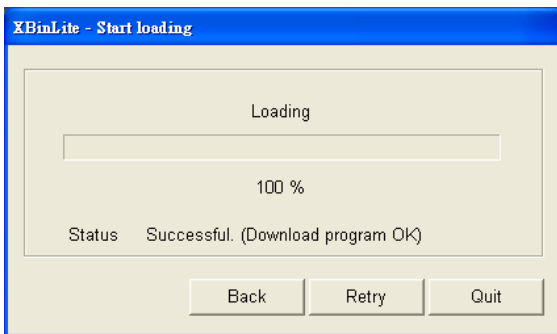
14. As “XbinLite –RESET” dialogue box showing, please select “**Yes**”, then click “**Start**”.



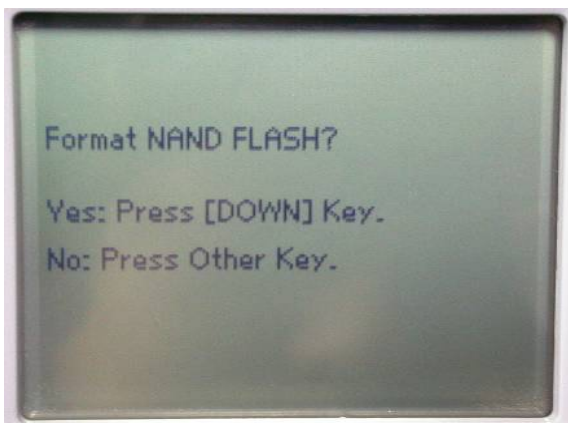
15. "XbinLite – Start loading" indicating the percentage of loading processes.



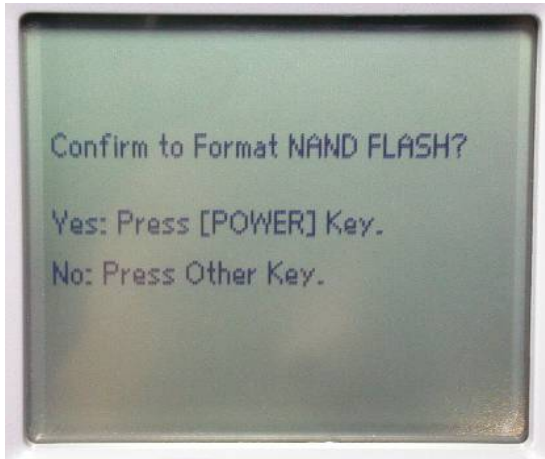
16. As updating processes doing, it will be showing on the Z-2050 as well.



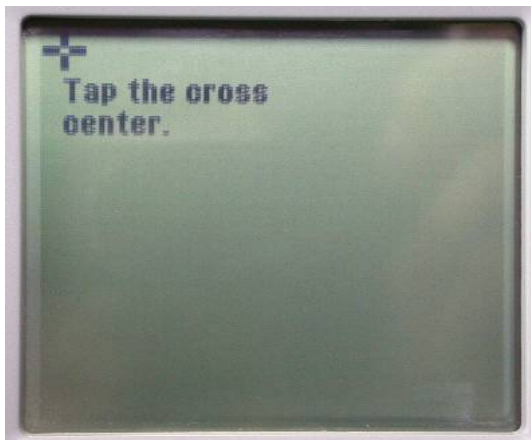
17. While "XbinLite – Start loading" dialogue box showing 100% on the screen, please click "Quit".



18. As Z-2050 being updated completely, its screen will be shown as picture on the left "Format NAND FLASH?" Please press "Down" (F5 key), if answer is Yes.



19. "Confirm to Format NAND FLASH?" will be shown next, Please press "**Power**" key as confirmed.



20. Using stylus to tap the center of cross showing on the screen accordingly. (upper left, middle, lower right) until move to "main" screen.



21. After enter the "**Main- ZEBEX**" screen, please disconnect "RS-232 cable", and then turn off the power of Z-2050.