

Introduction

This Quick Start Guide applies to 2D image readers. The varied models include handheld, hands-free and module. All models are capable of decoding 1D and 2D barcode symbologies.

The scanner must be properly powered before programming. During the programming mode, the scanner will acknowledge a good and valid reading with a short beep. Otherwise, the scanner will remain silent for invalid scanning.

The barcodes herein only prepares you ready to use the scanner. For detailed programming instructions and safety notices please refer to the complete Programming Guide in the manual CD.

If you can't find the manual CD, please contact your distributor.

Laser Safety

The devices using lasers comply with US 21CFR1040.10 and 1040.11 except for deviations pursuant to Laser Notice No. 50 dated July 26, 2002 and IEC608525-1:+A1:1997+A2:2001.

The laser classification is marked on one of the labels on the devices.

Avoid long term staring into direct laser light to prevent damage to user eyes.

Default Factory Device Setting

Parameter	Default
Trigger Mode	-Level (for handheld/hands-free scanner)
	-Presentation (for scan module)
Serial Host Type	SSI Host
USB Device Type	IBM Handheld USB
USB Country Keyboard Type	North American

* Level Mode

A trigger event activates decode processing, which continues until the trigger event ends, a valid decode, or the decode session time-out is reached.

* Presentation Mode

When the device detects an object in its field of view it triggers and attempts to decode.

1. Using Serial Interface

1.1 Serial Host

The default setting is SSI Host. If you use Serial Host, scan the **Enable Serial Host (No Variant)** barcode at right before use.

Note If you use Serial Host, your RS232 software, such as Windows HyperTerminal, can receive data from the scanner.



Enable Serial Host (No Variant)

1.2 Character Return

Scan the **<DATA> <SUFFIX 1>** barcode at right to set up character return.



<DATA> <SUFFIX 1>

1.3 SSI Host

The default setting is SSI Host. If you use SSI host, your host device can transmit data to software like Windows Notepad or Word. Follow the steps below to start using.

1. Connect the scanner serial cable to the host computer and connect a +5V power adapter to the DC jack on the cable. The scanner would give a "Do Re Mi" melody when powered on.
2. Read the **SSI Host** barcode at right to set up interface. (Skip this step if you are using the default setting.)
3. Execute KeySimulator.exe in the Manual CD after the computer detects the scanner.
4. Choose a COM port number and click "Send Return" (Figure 1).
5. Click "Start" to complete the setup procedure (Figure 1).



SSI Host

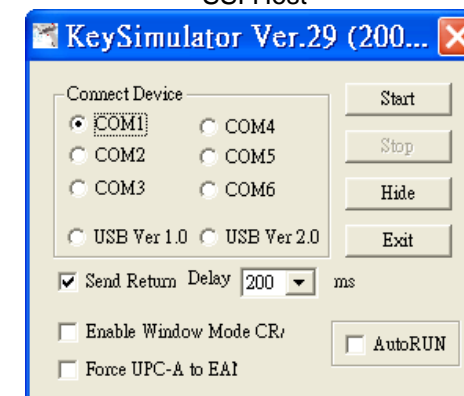


Figure 1

2. Using USB Interface

2.1 HID Keyboard Emulation

The default setting is IBM handheld USB. If you use HID keyboard emulation, scan the **HID Keyboard Emulation** barcode at right before use.



HID Keyboard Emulation

Note

Scanner driver for HID keyboard is built-in for Microsoft Windows version after 2000. But if you use Windows 98, you may need to download driver from Microsoft website.

2.2 Character Return

Scan the **<DATA> <SUFFIX 1>** barcode at right to set up character return.



<DATA> <SUFFIX 1>

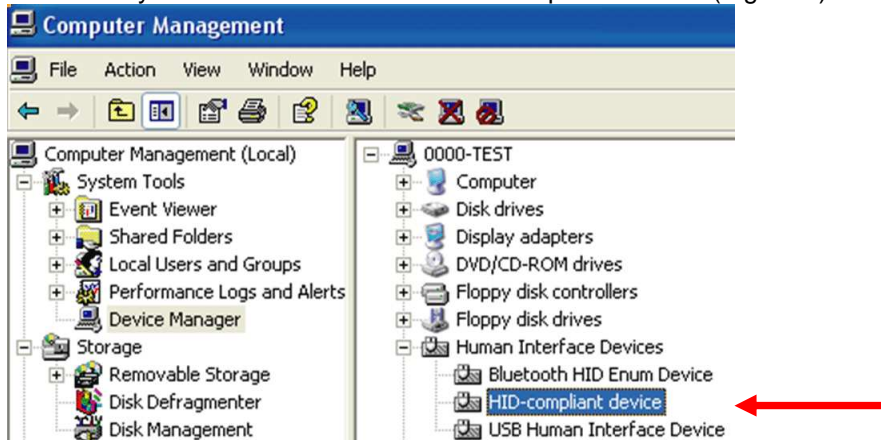
2.3 IBM Handheld USB

If you use IBM handheld USB, follow the steps below to start using the scanner.

1. Connect the scanner USB cable to the host computer.
2. Read the **IBM Handheld USB** barcode to set up interface. (Skip this step if you are in default setting.)
3. On the computer, check Human Interface Device to see if the computer successfully detects the scanner as "HID-compliant device" (Figure 2).



IBM Handheld USB



4. Execute KeySimulator.exe in the Manual CD after the computer detects the scanner.
5. Tick USB ver1.0 and Send Return (Figure 3).

