

Introduction

This Quick Start Guide applies to advanced 2D image readers. The varied models include handheld, hands-free and module. All models are capable of decoding 1D and 2D barcode symbologies.

The scanner must be properly powered before programming. During the programming mode, the scanner will acknowledge a good and valid reading with a short beep. Otherwise, the scanner will remain silent for invalid scanning.

The barcodes herein only prepares you ready to use the scanner. For detailed programming instructions and safety notices please refer to the complete Programming Guide in the manual CD.

If you can't find the manual CD, please contact your distributor.

Laser Safety

The devices using lasers comply with US 21CFR1040.10 and 1040.11 except for deviations pursuant to Laser Notice No. 50 dated July 26, 2002 and IEC608525-1:+A1:1997+A2:2001.

The laser classification is marked on one of the labels on the devices.

Avoid long term staring into direct laser light to prevent damage to user eyes.

Default Factory Device Setting

Parameter	Default
Trigger Mode	-Level (for handheld/hands-free scanner)
	-Presentation (for scan module)
Serial Host Type	SSI Host
USB Device Type	HID Keyboard Emulation
USB Country Keyboard Type	North American

* Level Mode

A trigger event activates decode processing, which continues until the trigger event ends, a valid decode, or the decode session time-out is reached.

* Presentation Mode

When the device detects an object in its field of view it triggers and attempts to decode.

1. Using Serial Interface

1.1 Serial Host

The default setting is SSI Host. If you use Serial Host, scan the **Enable Serial Host (No Variant)** barcode at right before use.

Note If you use Serial Host, your RS232 software, such as Windows HyperTerminal, can receive data from the scanner.



Enable Serial Host (No Variant)

1.2 SSI Host

The default setting is SSI Host. If you use SSI host, your host device can transmit data to software like Windows Notepad or Word. Follow the steps below to start using.

1. Connect the scanner serial cable to the host computer and connect a +5V power adapter to the DC jack on the cable. The scanner would give a "Do Re Mi" melody when powered on.
2. Read the **SSI Host** barcode at right to set up interface. (Skip this step if you are using the default setting.)
3. Execute KeySimulator.exe in the Manual CD after the computer detects the scanner.
4. Choose a COM port number and click "Send Return" (Figure 1).
5. Click "Start" to complete the setup procedure (Figure 1).



SSI Host



Figure 1



2. Using USB Interface

2.1 HID Keyboard Emulation

The default setting is HID keyboard emulation. If you have ever changed the interface setting, you need to scan the **HID Keyboard Emulation** barcode at right before you can use HID keyboard emulation again.

Note

Scanner driver for HID keyboard is built-in for Microsoft Windows version after 2000. But if you use Windows 98, you may need to download driver from Microsoft website.



HID Keyboard Emulation

2.2 CDC COM Port Emulation (USB Virtual COM)

If you use virtual COM port emulation, follow the steps below to start using the scanner.

1. Execute the driver (installMOTCDC.exe).
2. Connect the scanner USB cable to the host computer. The scanner would give a "Do Re Mi" melody when powered on. .
3. Read the **CDC COM Port Emulation** barcode at right to set up interface.
4. On the computer, check Device Manager to see if the computer successfully detects the scanner as "Symbol Bar Code Scanner." (The COM port number would vary depending on different hardware environment.) (Figure 2).



CDC COM Port Emulation

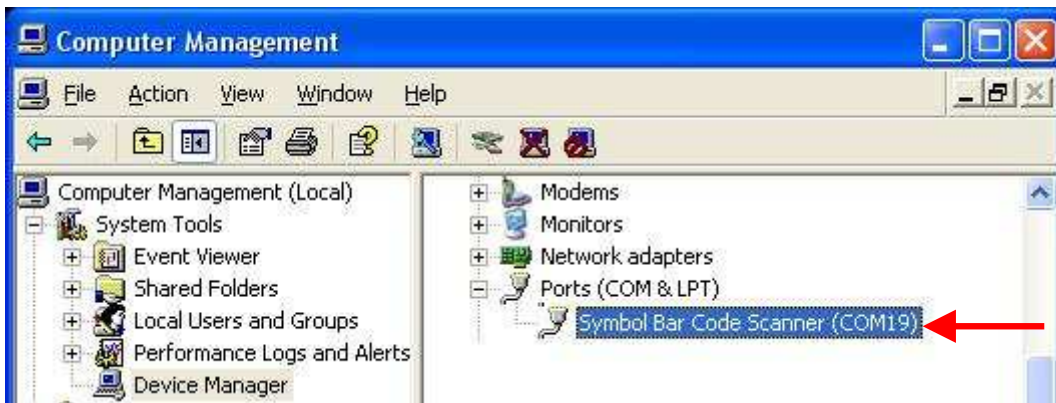


Figure 2

Note

If you can't directly install the driver, follow the Found New Hardware Wizard to locate and install the driver.

Quick Start Guide

Advanced 2D Image Readers

P/N: 593-9AZ00E-005

