

Z-3392BT connect to PC with BT dongle (HID mode)

1. Power on the scanner and program it with "HID Mode" .

scan

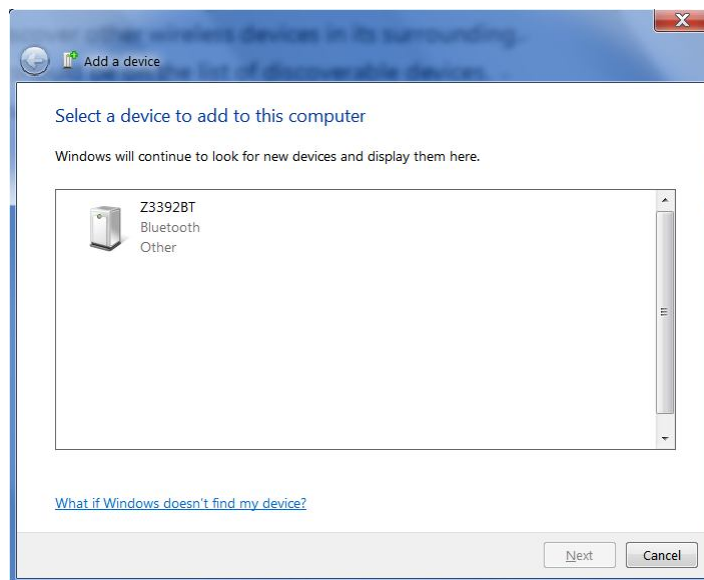


Return scanner to factory default:

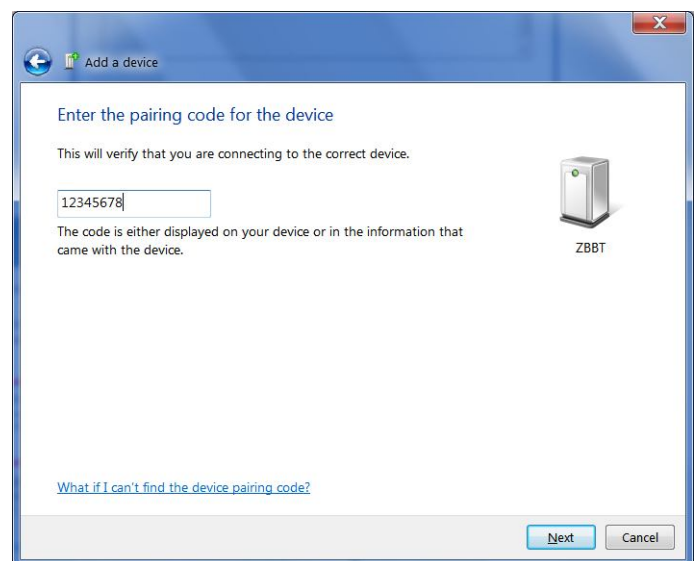
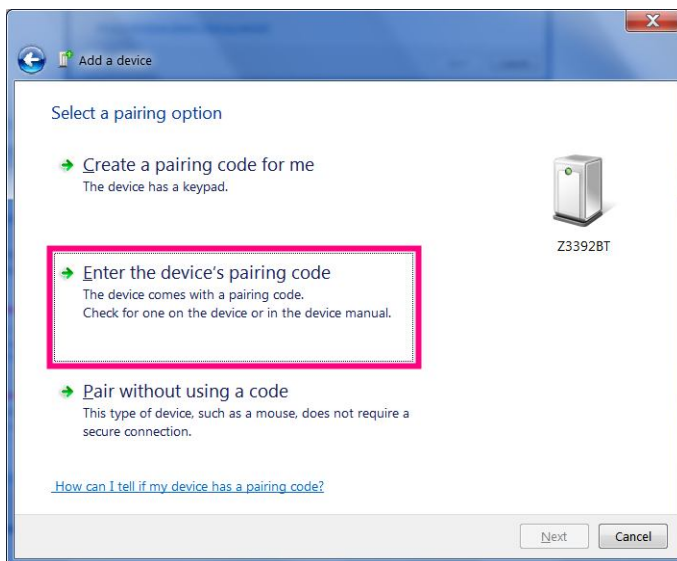


Scanner SPP Slave enable

2. Enable wireless connection on your PC and follow the instructions in your host to set it to discover other wireless devices in its surrounding.
3. The scanner should be on the list of discoverable devices.
The default name of the scanner is "Z3392BT" . Select your scanner and click next.



4. Enter the pin code "12345678" and click next to connect.



5. Check the Device Manager to find out the assigned COM port number for connecting.
The scanner would link well and sound beep while the COM port be opened.