


Z-319xBT connect to PC with BT dongle (HID mode)

1. Power on the scanner and program it with "HID Mode" .

a. scan  Start Of Configuration

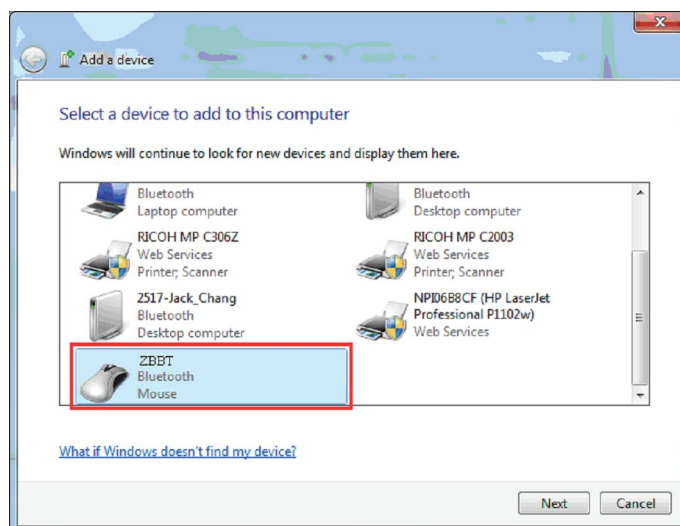
b. scan 

c. scan  End Of Configuration

2. Enable wireless connection on your PC and follow the instructions in your host to set it to discover other wireless devices in its surrounding.

3. The scanner should be on the list of discoverable devices.

The default name of the scanner is "ZBBT" . Select your scanner and click next.



4. Enter the pin code "12345678" and click next to connect.

